

500 Series

Rainbow Bridge Border Crossing, Niagara Falls, N.Y.

Building Size: 6' x 12'

Project Duration: 13 weeks



Ergonomic design for maximum comfort in a very tight space.

PROJECT OVERVIEW:

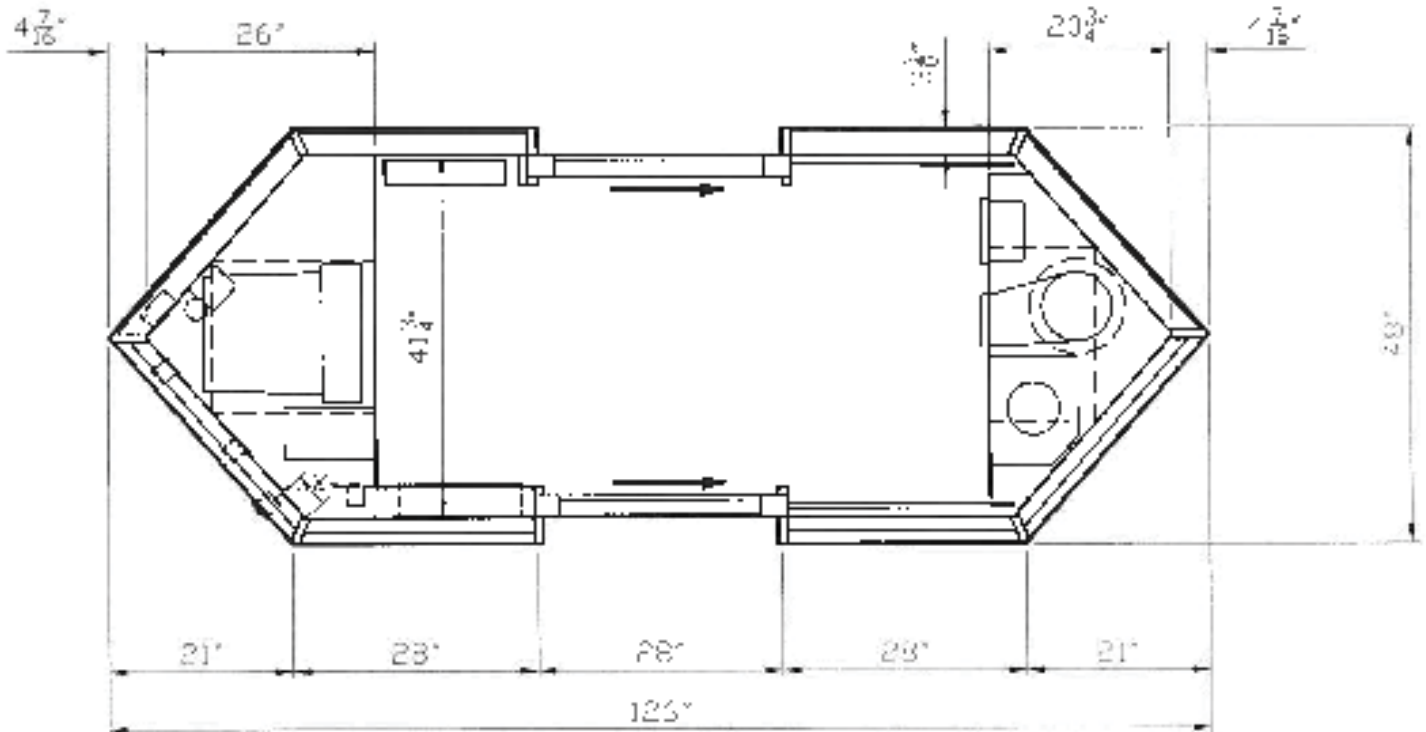
This job involved the supply and placement, via crane, of 21 custom inspection booths and toll kiosk booths. These ergonomic kiosks were designed for maximum comfort in a very tight space.

FEATURES & BENEFITS

- Smooth glide sliding window / door combination
- Seamless mild steel anti oilcan construction
- Pneumatic tube delivery system
- U.L. approved electrical package
- Tinted bulletproof glazing
- Anti-fatigue rubber flooring
- Reflective pebbled roof cladding with internal H.P.S. lighting
- Roof louvres

SELECTION. STYLE. SECURITY. SPEED.

FLOOR PLAN



① FLOOR PLAN

Our expert sales staff can analyze your site, record architectural components and features, then design and propose a concept with floor plan and coloured rendering (for your approval). No obligation. Renderings assist in site plan approval.

SELECTION. STYLE. SECURITY. SPEED.